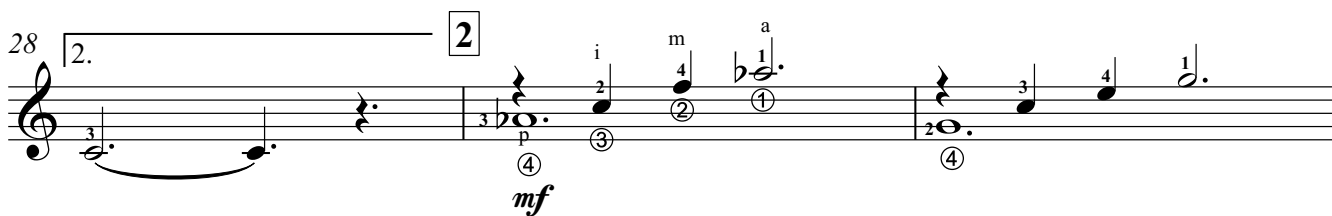
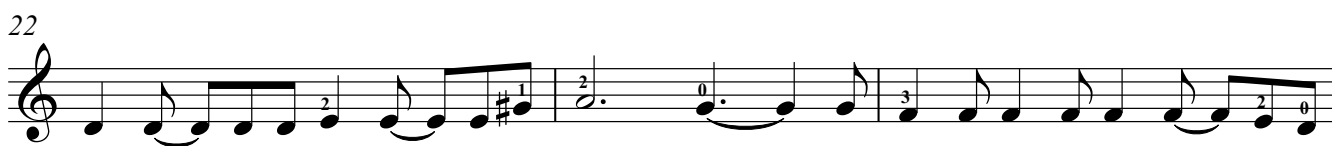
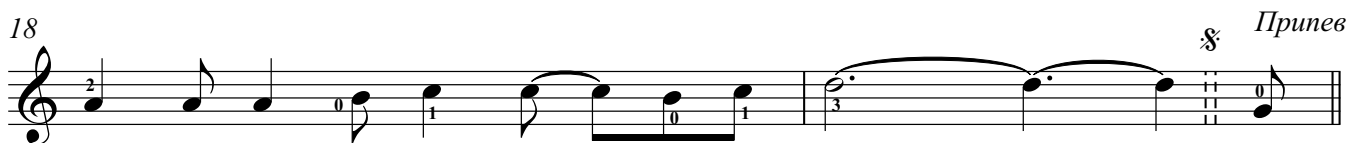


Allegro**10**12 1 играть только 1 Куплет**mf**

34

37 **poco rall** I

FL5 *mp*

Detailed description: This image shows measures 37 through 40 of the musical score for 'The Swan'. Measure 37 begins with a treble clef and a key signature of one flat (B-flat). The notation includes fingerings (1, 0, 3, 1, 3, 1, 3, 1, 2, 3, 0, 1, 3) and a dynamic marking of *mp*. A 'poco rall' (poco rallentando) instruction is written above the staff. The piece concludes in measure 40 with a final chord (F4, A4, C5) and a fermata. The key signature changes to natural (no flats or sharps) for the final measure. The tempo marking 'poco rall' is positioned above the staff, and the dynamic 'mp' is below the staff. The measure numbers 37, 38, 39, and 40 are indicated at the bottom of the staff.

40 **3** Tempo primo

[illegible]

45 